



Spray system for the chemical stripping of metals



FASTRIP S

- ✓ PAINT STRIPPING MACHINE
- ✓ SPRAY PAINT STRIPPING
- ✓ ROTATING BASKET



FASTRIP S



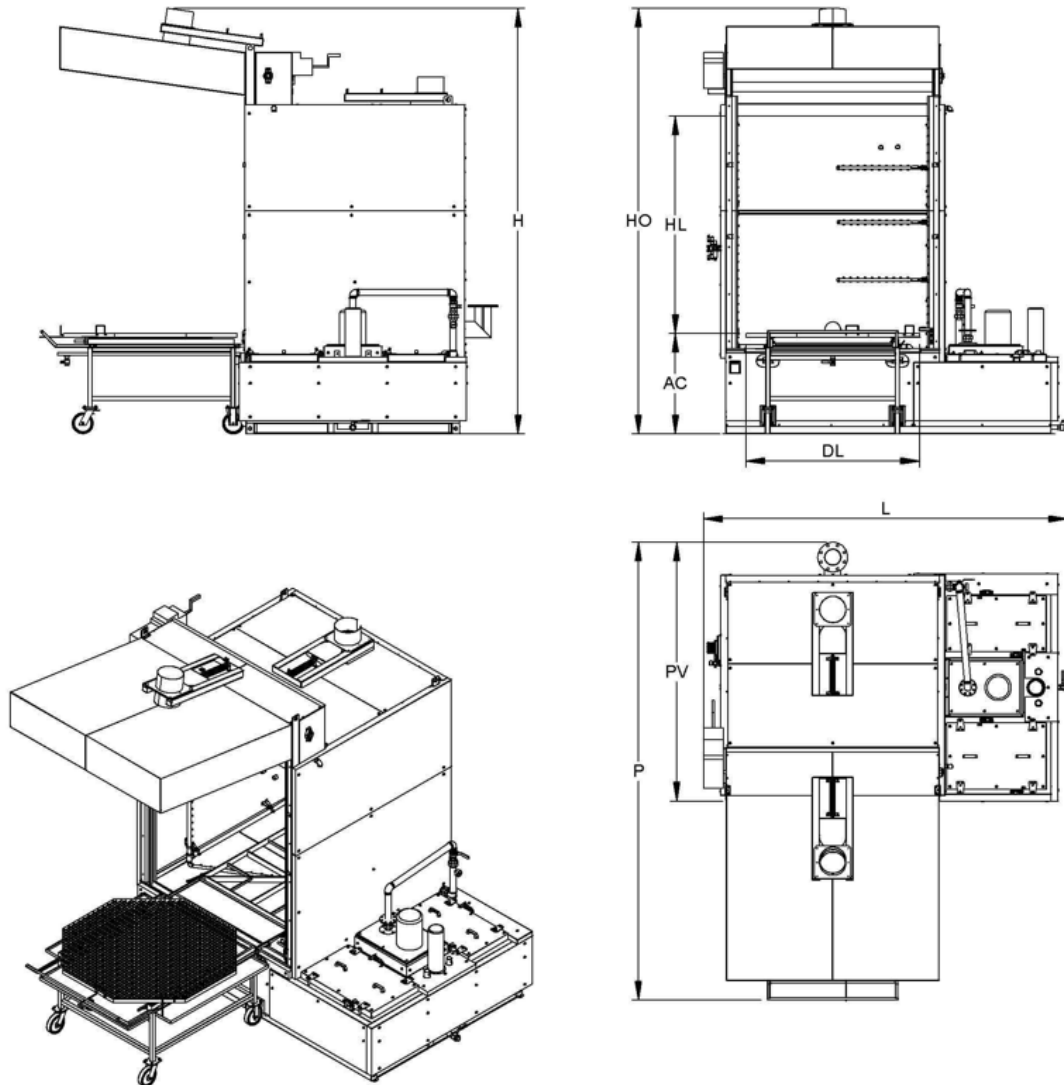
FASTRIP S: SPRAY SYSTEM FOR
THE CHEMICAL STRIPPING OF METALS



FASTRIP S

Model: 1650x2000HT

Power supply	400V 50HZ+3PH+N+PE
Load capacity	800 kg
Tank capacity	1.000 l
Useful load dimension	Ø1650mm x 2000 (H)
Pump 1	40m ³ /h
Mixer	Variable 1-3
Heating system	35 kW
Motor for parts rotation	0.2 kW
Integrated agitator	0.25 kW, shaft and propeller in Stainless Steel AISI 316
Loading/Unloading	Manual from worker

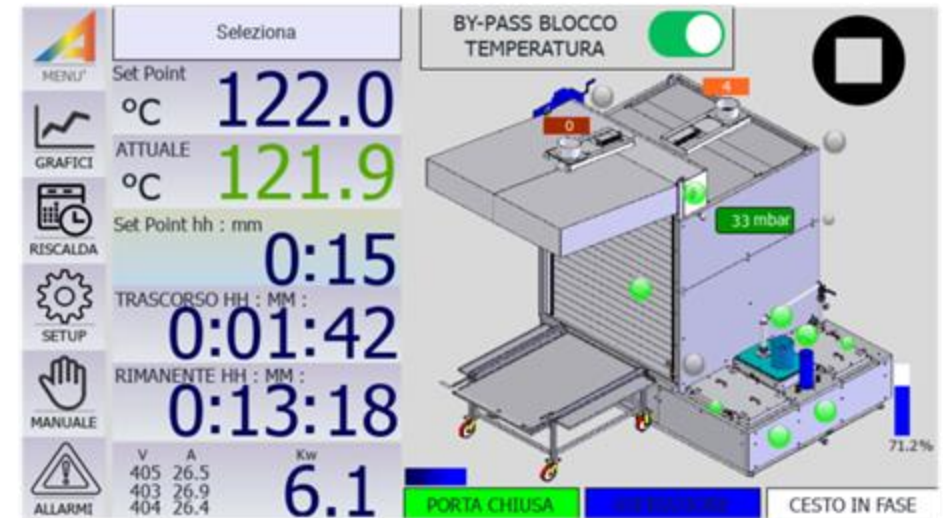


FASTRIP S

Spray system for the chemical stripping of metals



- ✓ Touch screen panel
- ✓ Remote monitoring
- ✓ Total adjustable process parameters



FASTRIP S

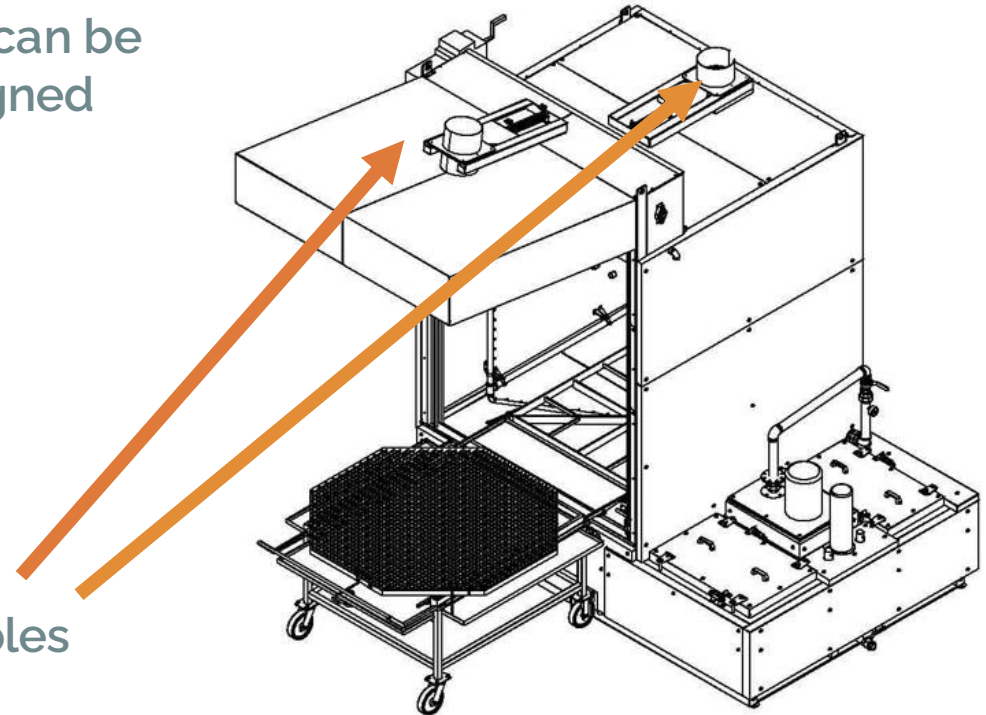
Spray system for the chemical stripping of metals



The baskets can be
custom designed



Fumes extraction holes

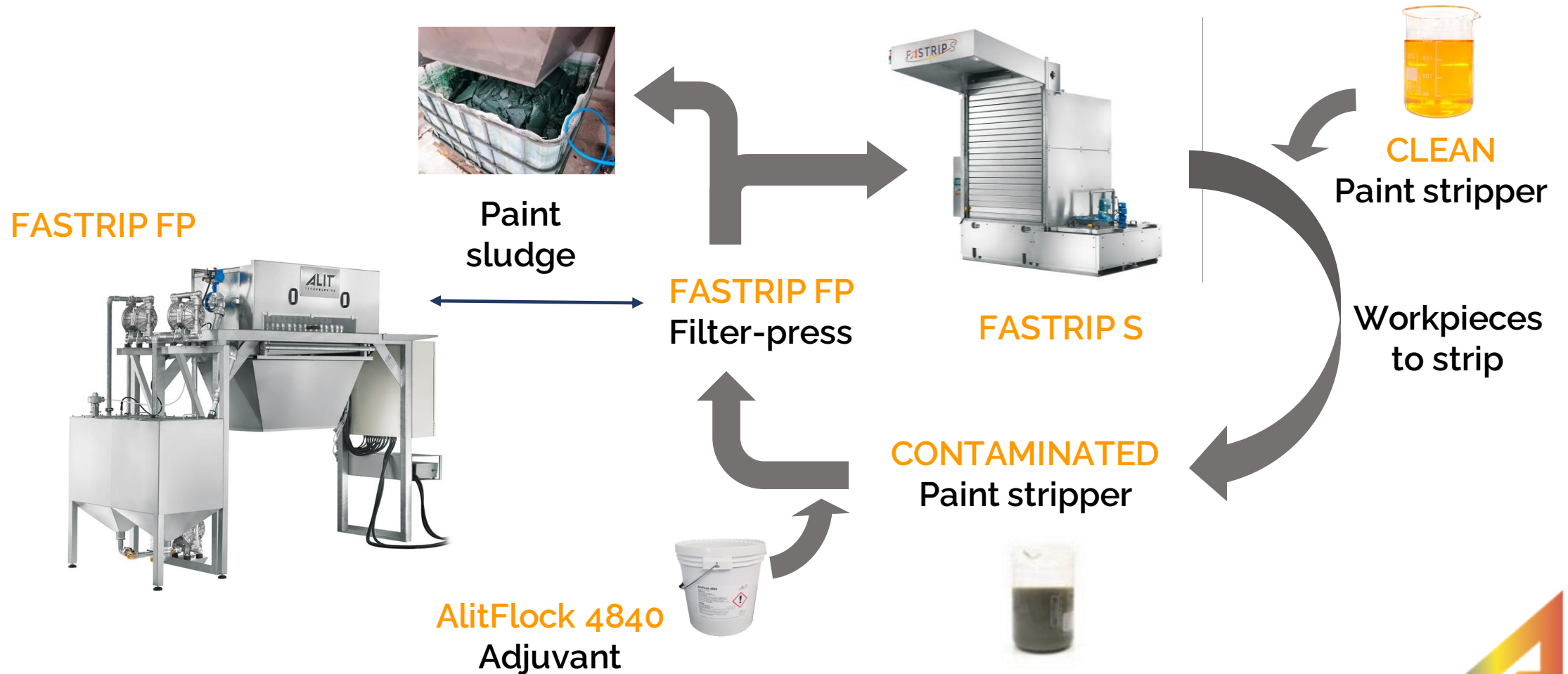


FASTRIP S

- ✓ Double wall stainless steel with 50 mm thermal insulation all over the machine
- ✓ Stripping solution temperature normally between 80°C-125°C
- ✓ External electrical heaters
- ✓ Efficient mixing of paint stripping solution



FASTRIP S



FASTRIP S

focus on machines
FASTRIP S

CASE HISTORY

CASE HISTORY ON n.2 MARCH 2022 ISSUE OF OUR ALIT ACADEMY MAGAZINE



ALIT ACADEMY
magazine

**OPTIMIZING THE
PROCESS FOR ENHANCED
COST-EFFICIENCY**

Discover ALIT's concrete and
alternative solutions to reduce costs.

LETTER TO THE READERS
by Loris Rossi
CEO of ALIT Technologies

FOCUS ON CHEMICALS
ALITFLOCK 4840
FLUORIDITE

FOCUS ON MACHINES
FASTRIP S
FASTRIP FP

n. 2
March 2022



The company object of this case study is a paint stripping contractor located in Northern Italy. This customer wanted to improve its in-house processes by adopting the high-temperature chemical spray paint stripping technology and it chose FASTRIP S (with paint strippers from the Metalstrip range). ALIT Technologies worked together with its staff to adapt this paint stripping plant to its strict requirements, thus optimising its production flow and reducing its environmental impact and energy consumption. As the workpieces to be stripped have different shapes and sizes, it was also important to identify their optimal arrangement. FASTRIP S allows the parts to be placed in the baskets with the most appropriate arrangement for the specific paint stripping needs of each of them, so that the paint stripping product can cascade around them, flow into their cavities, and drain efficiently, avoiding any drag outs that could damage the bath.

The benefits brought to the company have therefore been as follows:

- FASTRIP S has reduced the time needed for paint stripping to no more than 2 hours, as well as reducing energy consumption and environmental impact.
- FASTRIP S has reduced the need for downstream quality controls thanks to effective, homogeneous treatment.
- FASTRIP S has improved production flexibility, as this vertical modular plant can be customised and expanded to cope with production peaks and even integrated with a cleaning machine.

ALIT Technologies' laboratories can carry out tests to adapt the FASTRIP S paint stripping plant to the needs of every customer, drafting a full report and, when possible, a proposal for the efficient installation of this system at its premises. In addition, ALIT offers a specialised technical assistance service, supporting customers throughout the whole service life of their machines and suggesting the best products to use with them, in order to achieve ever better quality standards in their paint stripping operations.

reduction of the time needed for paint stripping
reduction of the need for quality controls
improvement of the production flexibility



FASTRIP S

- ✓ Small footprint
- ✓ Very high productivity
- ✓ SAFE (Machine directives 2006/42/CE)
- ✓ Fast paint stripping cycles
- ✓ Modular custom-design



WE ARE PRESENT IN THE FOLLOWING COUNTRIES:





Thanks for your attention!